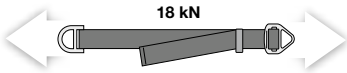


# CONNEXION FAST

CE 0082 EN 795 type B: 2012 NFPA

(EN) Anchor strap  
(FR) Sangle d'amarrage



0,2 ↔ 1,5 m 425 g  
0,2 ↔ 2,5 m 485 g

## WARNING

Activities involving the use of this equipment are inherently dangerous. You are responsible for your own actions and decisions.

- Before using this equipment, you must:
  - Read and understand all Instructions for Use.
  - Get specific training in its proper use.
  - Become acquainted with its capabilities and limitations.
  - Understand and accept the risks involved.



**FAILURE TO HEED ANY OF THESE WARNINGS MAY RESULT IN SEVERE INJURY OR DEATH.**

### NFPA CERTIFICATION FOR CONNEXION FAST

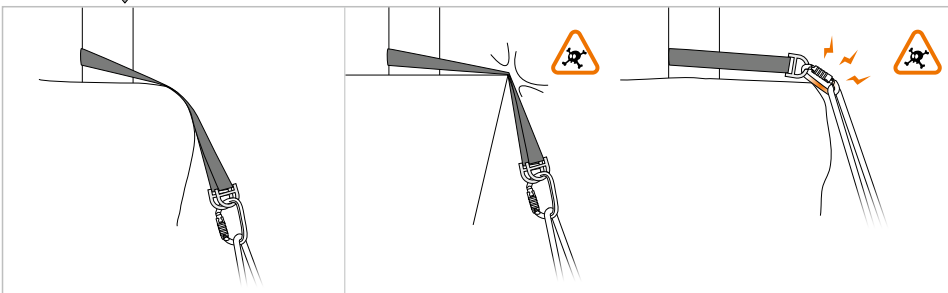
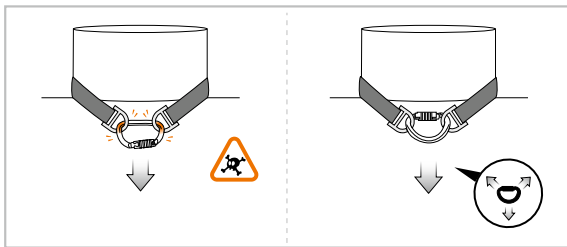
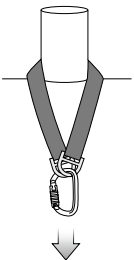
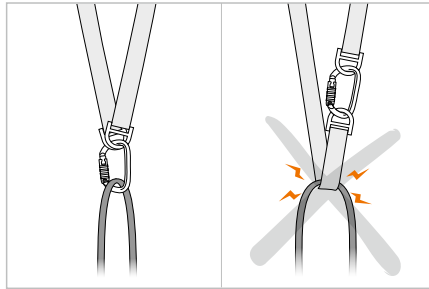
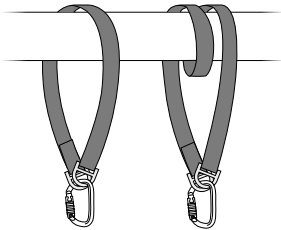
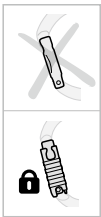
This product must not be exposed to temperatures below -40°C or above +80°C. Exposure of the strap to flame or high temperature beyond these limits could cause the strap to melt, burn and fail. Take care to protect the strap from such exposure during use, transport, storage, etc. Read this notice carefully and keep it in a permanent record for reference after it is removed from the strap. Any user of the strap should be provided with a copy of this notice for reference before and after each use.



Additional information regarding multiple configuration strap can be found in NFPA 1500 and NFPA 1983.

### 5. Installing the CONNEXION

Mise en place de la CONNEXION

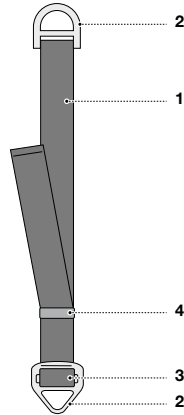


### 1. Field of application (text part)

Champ d'application (partie texte)

### 2. Nomenclature

Nomenclature



### 3. Inspection, points to verify

Contrôle, points à vérifier



**PPE checking**  
Vérification EPI  
PETZL.COM



### 4. Compatibility (text part)

Compatibilité (partie texte)

### Traceability and markings / Traçabilité et marquage

CE 0082

- a. Body controlling the manufacture of this PPE
- b. Notified body that carried out the CE type examination

APAVE SUDEUROPE SAS  
8 rue Jean-Jacques Vernazza  
Z.A.C. Saumaty-Séon - CS 60193  
13322 MARSEILLE CEDEX 16  
N°0082

e. Individual number

YY M 0000000 000

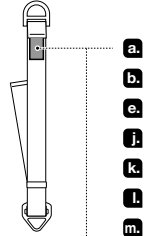
- f. Year of manufacture
- g. Month of manufacture
- h. Batch number
- i. Individual identifier

j. Standards

k. Carefully read the instructions for use

l. Model identification

m. For single person use only



### 6. Additional information

Informations complémentaires

A. Lifetime / Durée de vie

Serial n°  
XXXXXX XXXX + 10 years

B. Markings  
Marquage



C. Acceptable T°  
T° tolérées

+ 80°C / + 176°F  
- 40°C / - 40°F

D. Precautions for use / Précautions d'usage



E. Cleaning / Nettoyage



F. Drying / Séchage

+ 30°C maxi.  
+ 86°F maxi.



G. Storage - Transport

Stockage - transport

+ 30°C / + 86°F  
+ 10°C / + 60°F



J. FAQ - Contact

Questions - Contact



PETZL  
F-38920 Crolles  
Cidex 105A  
**PETZL.COM**  
ISO 9001  
© Petzl  
Made in France

